



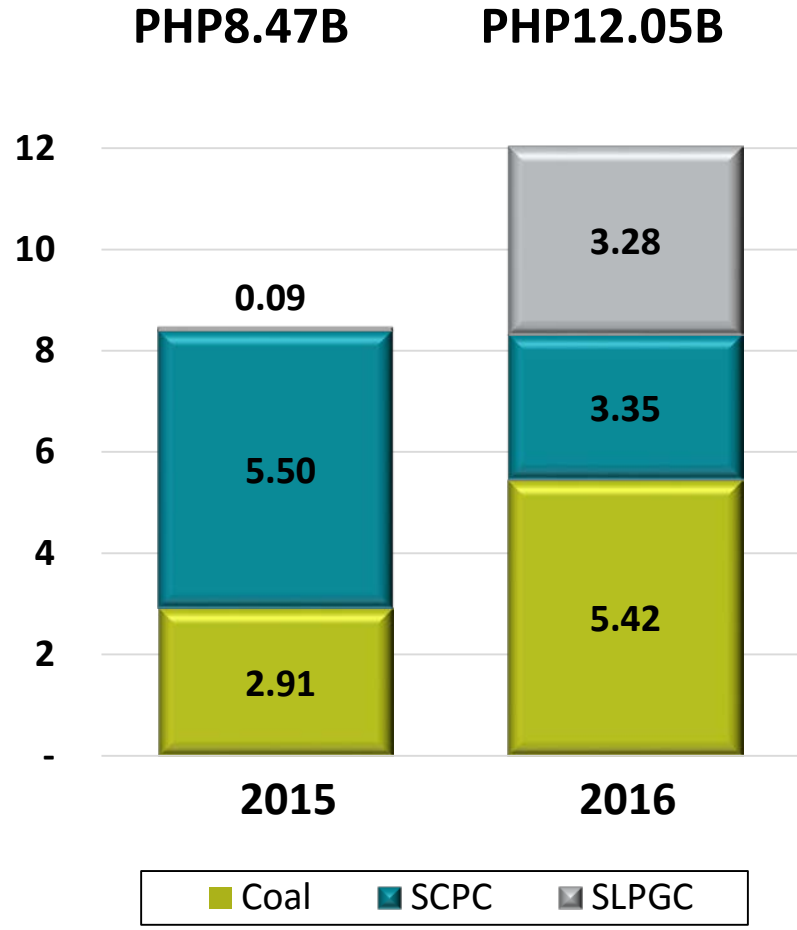
**SEMIRARA**  
**MINING & POWER**  
**CORPORATION**

**Annual Stockholders' Meeting**

*Manila Polo Club, 2 May 2017, 9:30 AM*

# CONSOLIDATED COMPREHENSIVE NIAT

2015 vs 2016


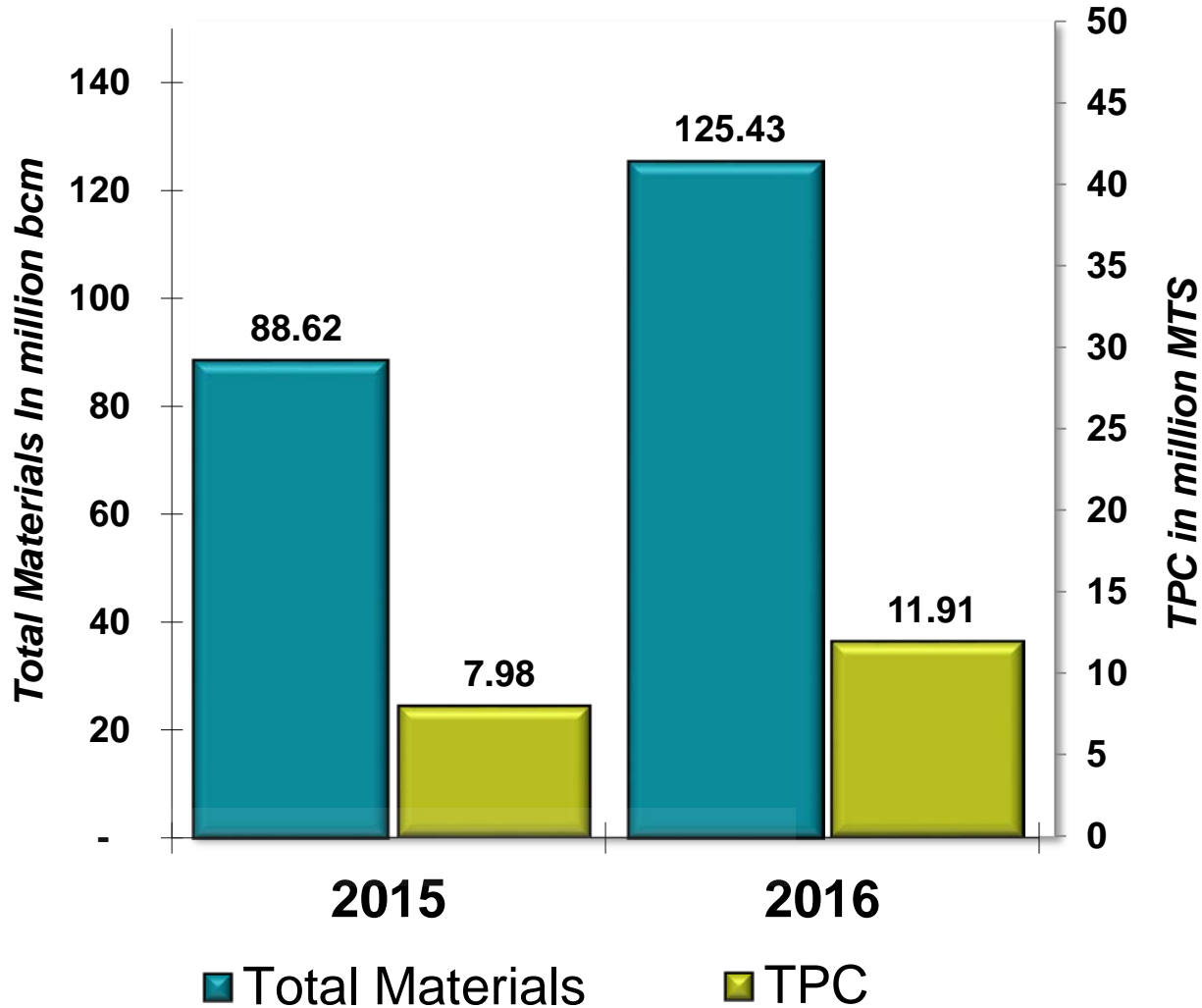


**42%**


SLPGC's successful commercial operation offset SCPC's lower energy sales; Increased coal sales volume drove higher core income.

# COAL PRODUCTION

2015 vs 2016



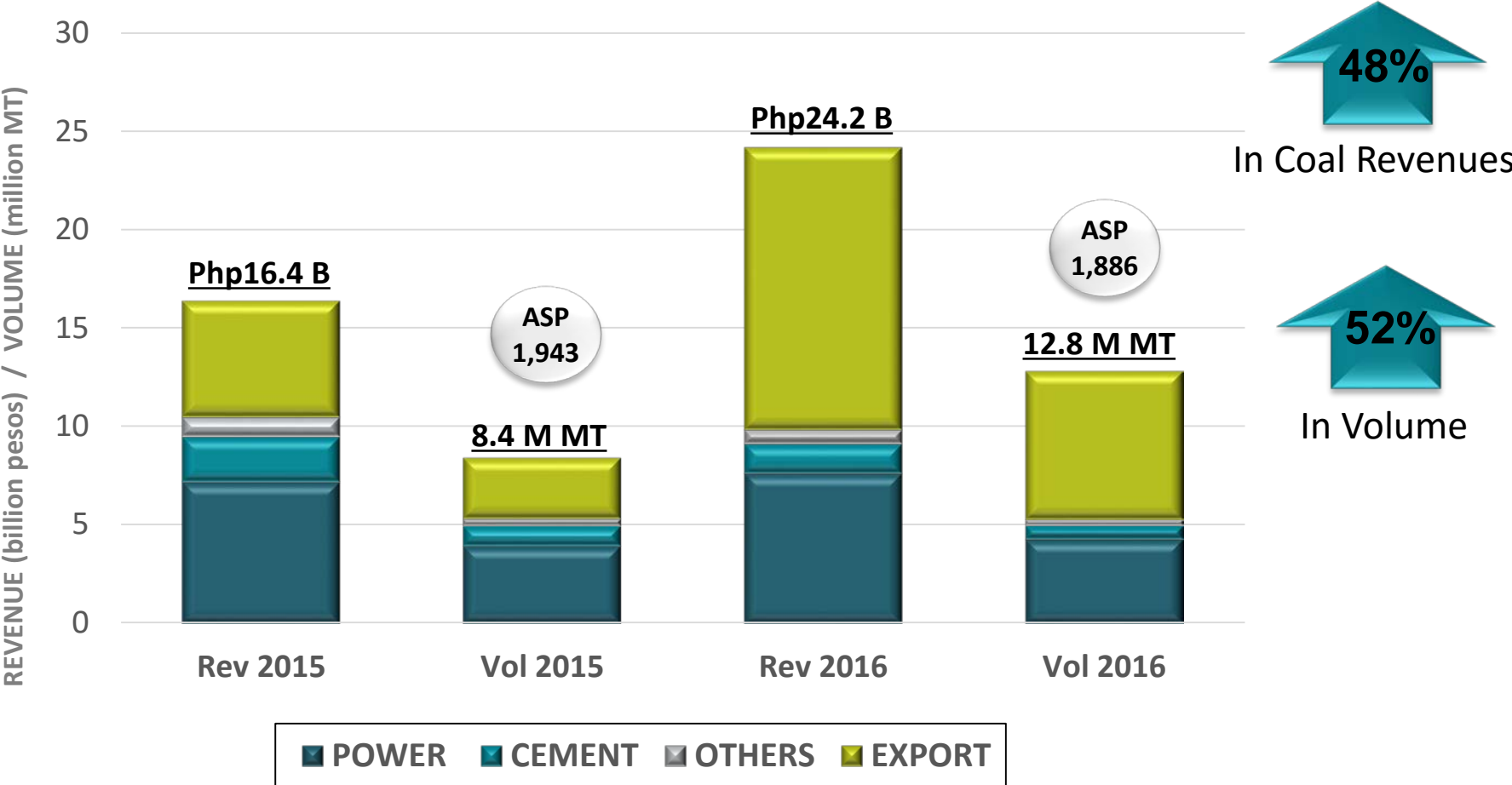
**42%**  
*in Total Materials*



**49%**  
*in TPC*

# COAL SALES

2015 vs 2016





# SLPGC

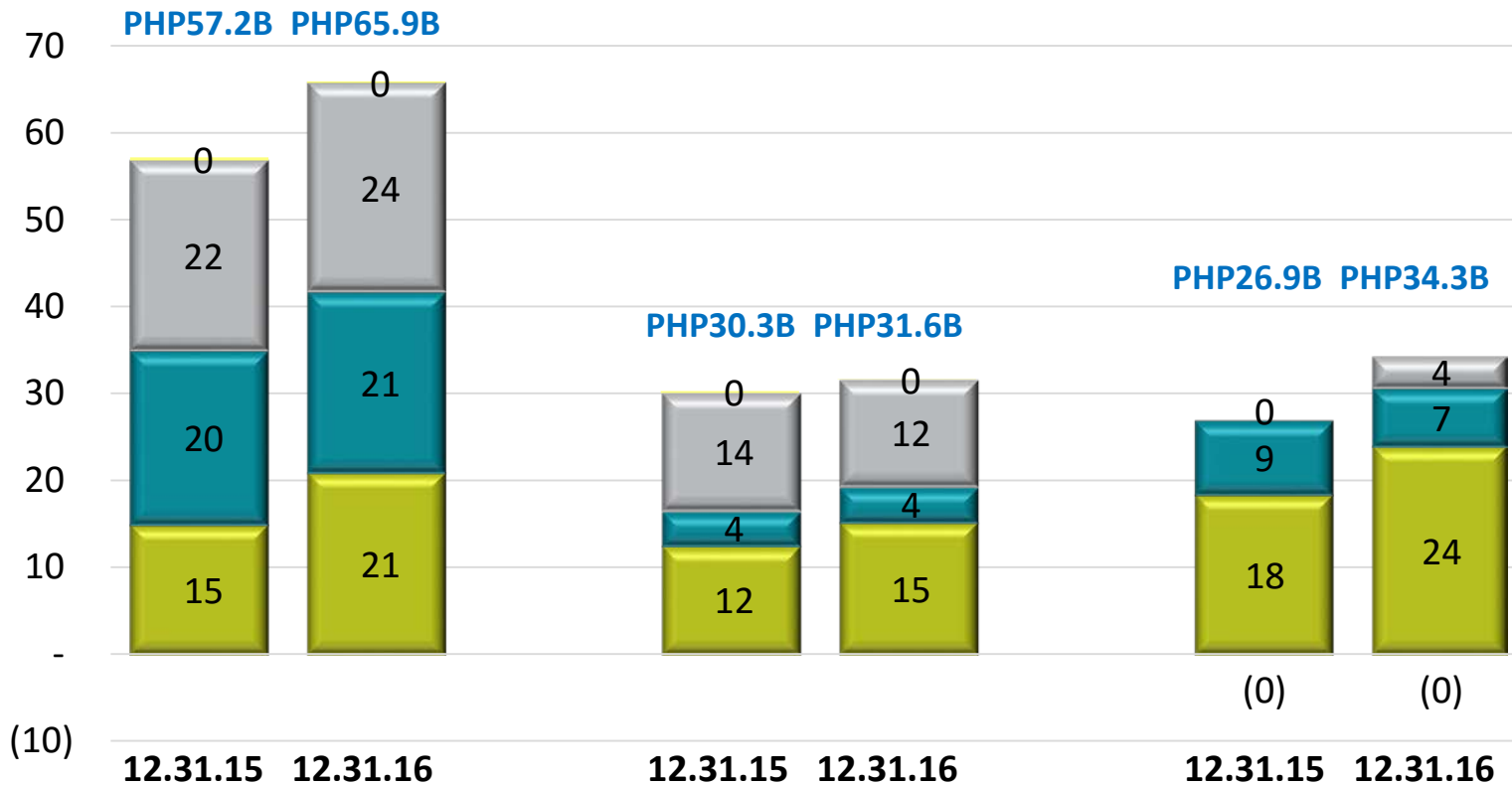
2 x 150 MW CFB Power Plants



SLPGC declared commercial operations on 26 August 2016

# CONSOLIDATED ASSETS, LIABILITIES, & EQUITY

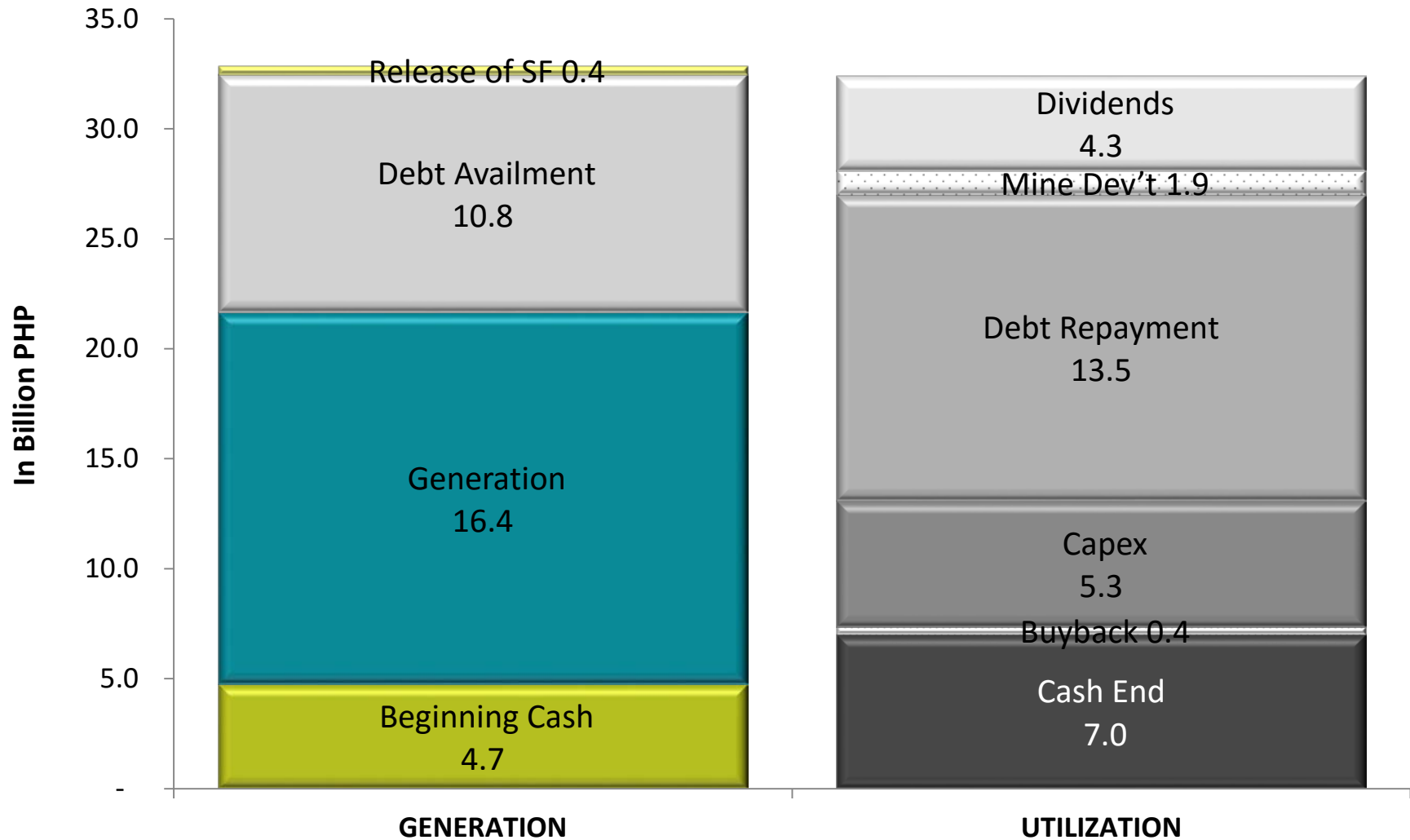
2015 vs 2016)



# CASH GENERATION & UTILIZATION - CONSOLIDATED



2016



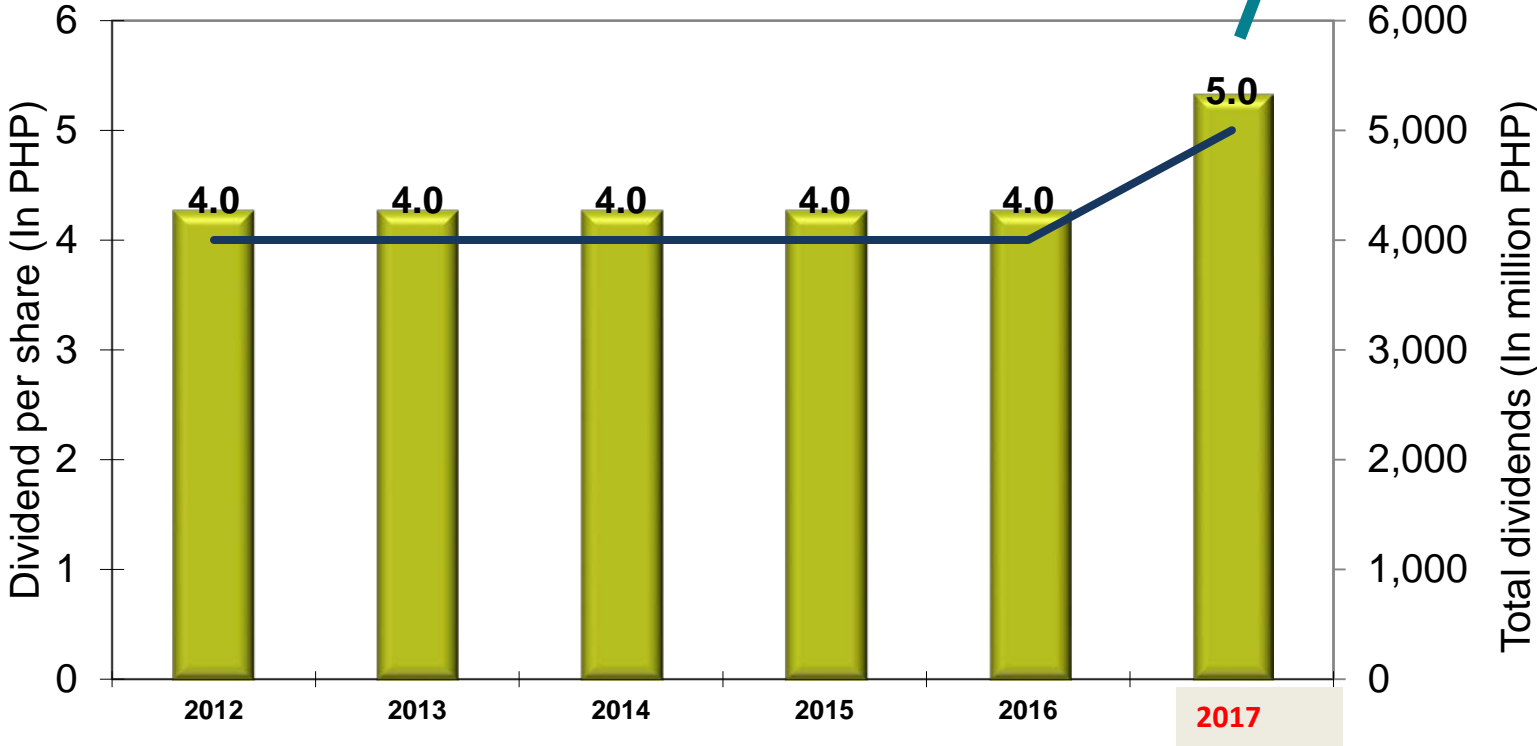
# SCC SHARES BUYBACK

# of SCC Shares bought back	3,463,570
Cost of Buyback	PHP 387,547,015
Average Cost / Share	PHP 111.89

# CASH DIVIDEND



**Paid April 25, 2017**



Payout Ratio	78%	81%	80%	55%	63%	53%
Dividend Policy	20% of previous year's NIAT					

\* restated to 2014 post-stock dividend outstanding shares

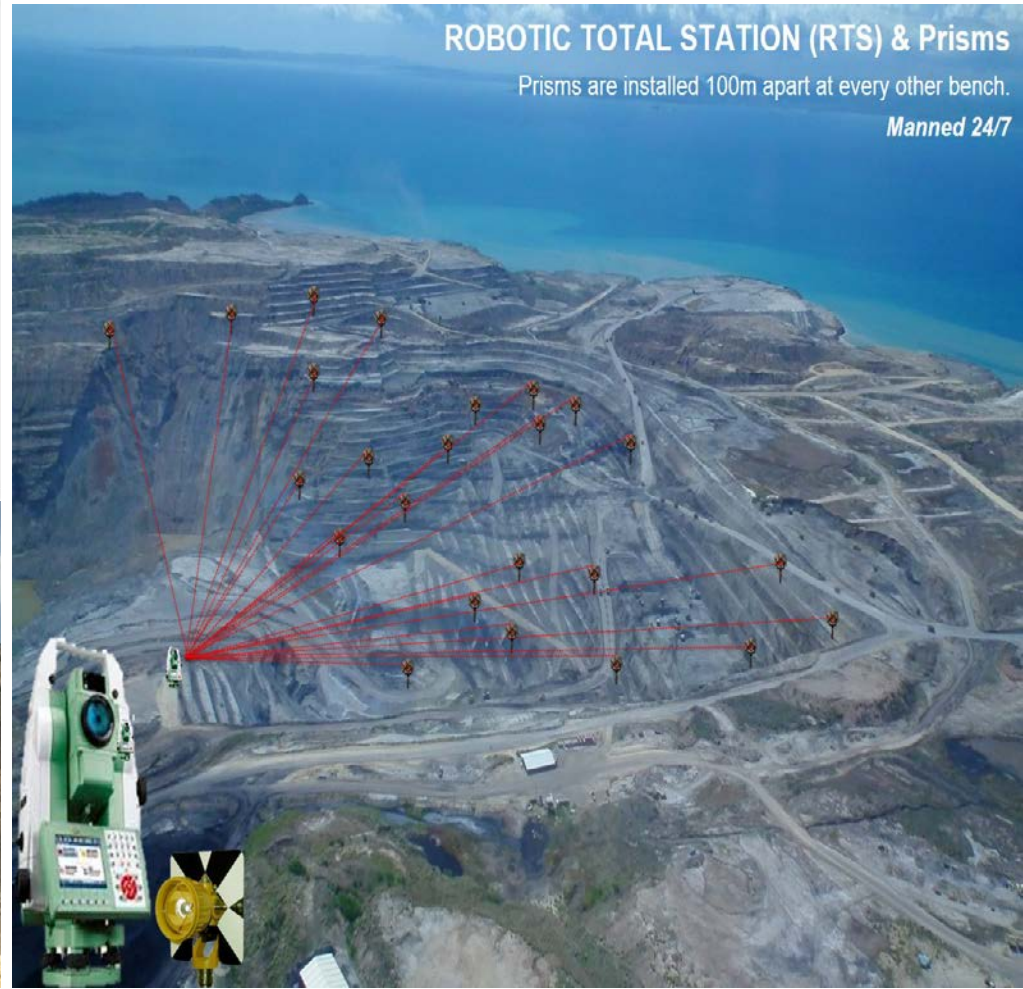
# CONSOLIDATED FINANCIAL RATIOS



	2016	2015	Inc(Dec)	%Inc(Dec)
Current Ratio	1.35	0.97	0.38	39%
Debt-to-Equity Ratio	0.92	1.12	0.20	18%
Return on Equity	39%	34%	5%	15%



# CONTINUED SUSTAINABLE COMMITMENT TO QUALITY & SAFETY



Slope stability radars for Molave and Narra mines, and Robotic Total Station (RTS)



# CONTINUED SUSTAINABLE COMMITMENT TO QUALITY & SAFETY

Analytical Laboratory Equipment





# CORPORATE SUSTAINABILITY *and* RESPONSIBILITY

**Towards Self-Sufficient Communities**

**Semirara Island, Caluya, Antique Province**





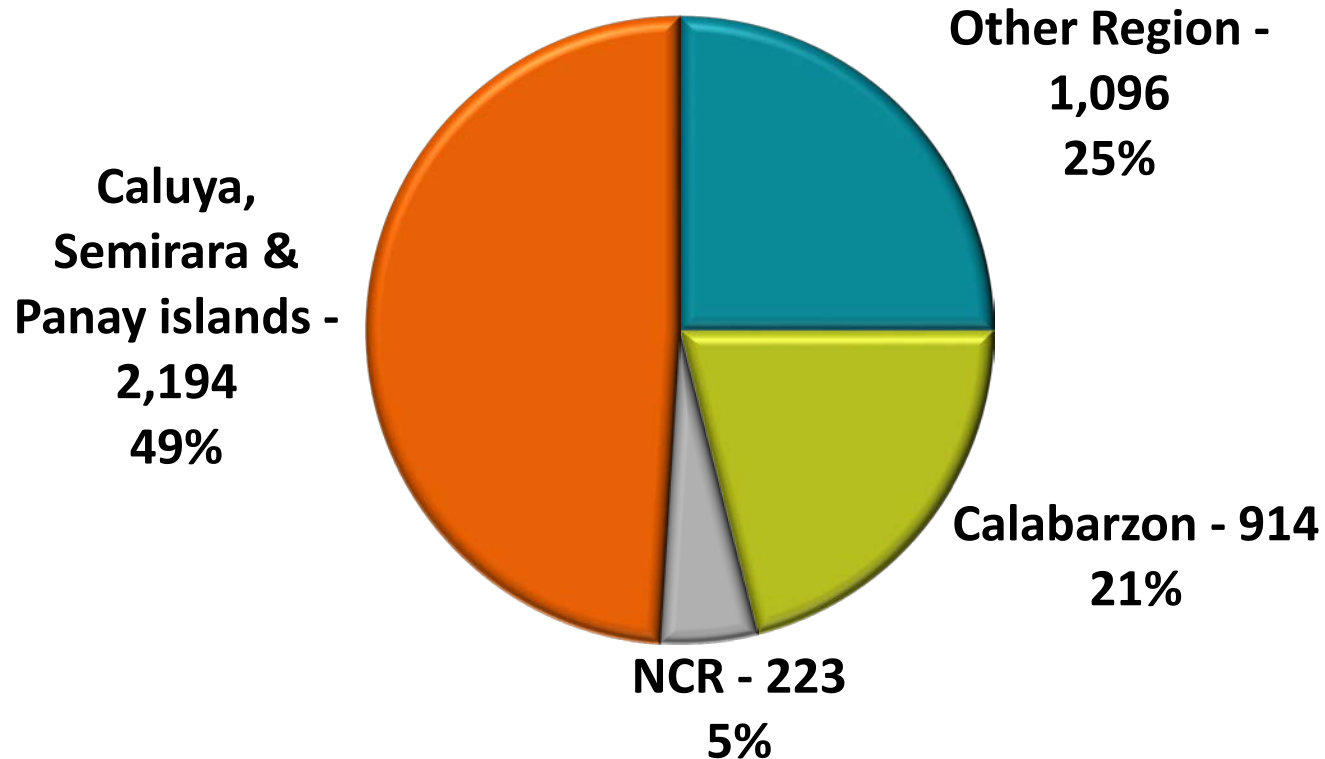
# CORPORATE SUSTAINABILITY AND RESPONSIBILITY – CALACA COMMUNITIES



# EMPLOYMENT

**Total Workforce = 4,427**

*As of December 2016*



The Company employs 4,427 people nationwide from around 600 employees in 1997.



# ELECTRIFICATION



Ceremonial switching on of the electrification project led by-then DOE Secretary Mario Tiaoqui and NPC President, the late Frederico Puno

# CEREMONIAL SWITCHING – “O ILAW” PROJECT



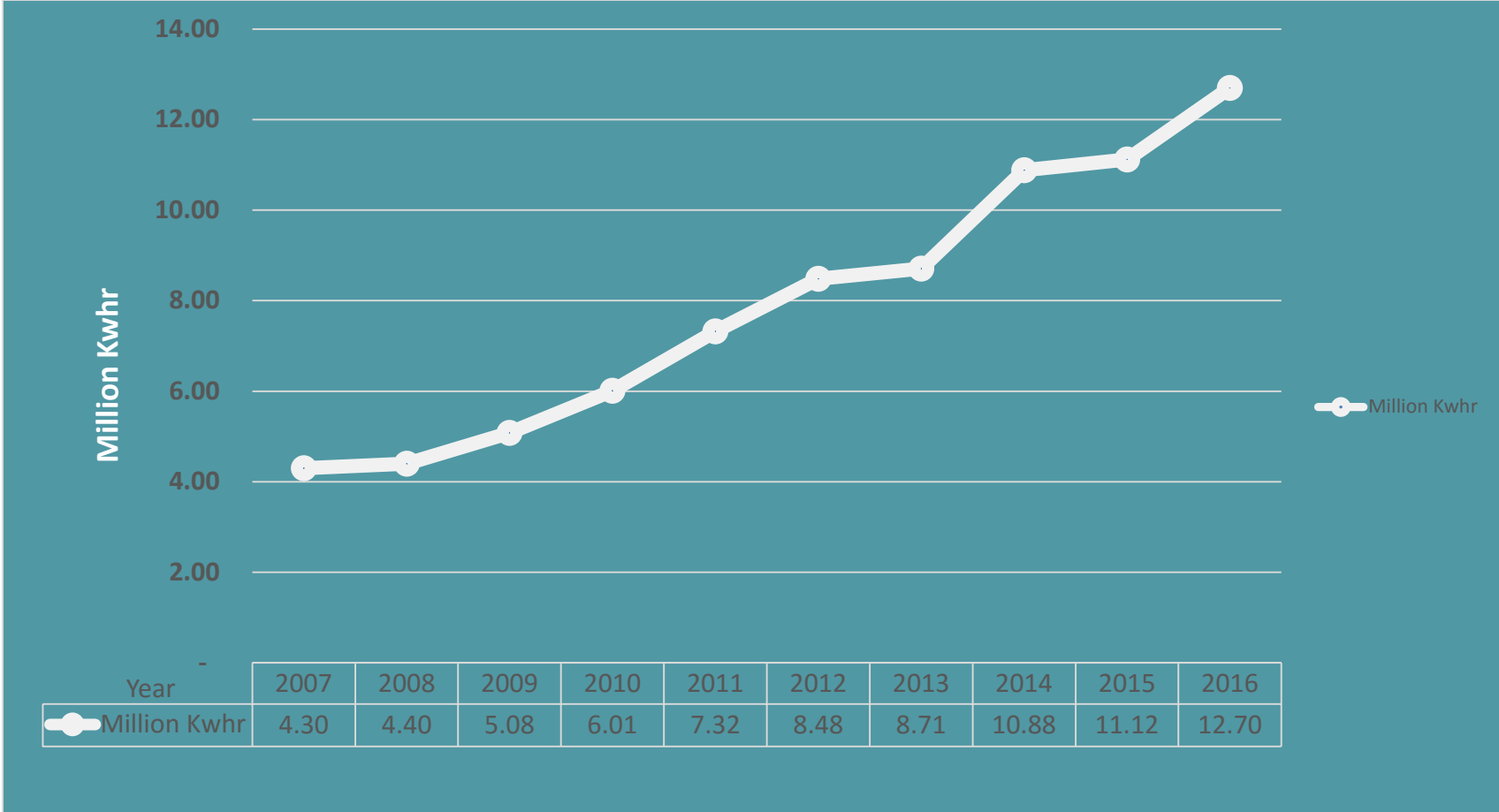
# ELECTRIFICATION



Delivering affordable energy to Semirara Island communities.

# ELECTRICITY USED BY COMMUNITY

2007 - 2016



Inclusive of company housing, a total 12,701,191 kilowatt hours was consumed in 2016. The Company only charges **PHP2.50/kwh** to ANTECO from 2001 up to present.

# BUSINESS PERMITS REGISTERED IN SEMIRARA ISLAND

1999 - 2016



The Company's presence in Semirara Island created a broader economic contribution to its host community. The growth and opening of business establishments meant additional employment and income opportunities for the residents.



## DONATED CLASSROOMS, 2003 - 2016

YEAR	Semirara Island and other barangays of Municipality of Caluya	Municipalities of Calaca and Balayan, Batangas	TOTAL
2003	6		6
2004	4		4
2005	-		0
2006	18		18
2007	4		4
2008	6		6
2009	4		4
2010	4	-	4
2011	16	-	16
2012	16	10	26
2013	21	40	61
2014	18	6	24
2015	11	3	14
2016	16	-	16
<b>Total</b>	<b>144</b>	<b>59</b>	<b>203</b>

Inclusive of tables, chairs, toilets, and other school equipment.

# EDUCATION

Donated Classrooms





# EDUCATION

Donated Classrooms



K-12 Building, Semirara Island



# EDUCATION

Donated Classrooms





# SEMIRARA TRAINING CENTER, INC.



# SEMIRARA TRAINING CENTER, INC.

Performance 2006 - 2016



	From Semirara, Caluya and Sibay Islands	Other Places	Total	Successful Graduates
<b>AUTOMOTIVE SERVICING</b>	<b>140</b>	<b>237</b>	<b>377</b>	262
<b>WELDING (SMAW)</b>	<b>302</b>	<b>259</b>	<b>561</b>	458
<b>INDUSTRIAL MACHINES SERVICING TECHNOLOGY (IMST)/MOBILE EQUIPMENT SERVICING</b>	<b>8</b>	<b>175</b>	<b>127</b>	100
<b>MACHINE SHOP PRACTICE</b>	<b>121</b>	<b>91</b>	<b>212</b>	154
<b>INDUSTRIAL ELECTRICITY</b>	<b>48</b>	<b>208</b>	<b>256</b>	169
<b>OTHERS (Housekeeping, Secretarial and Computer Servicing)</b>	<b>54</b>	<b>8</b>	<b>62</b>	59
<b>TOTAL</b>	<b>619</b>	<b>976</b>	<b>1595</b>	<b>1202</b>

584 of the successful graduates remain employed with the Company as of today (of these graduates, 2 are now supervisors, 1 technical trainer, 95 mechanics, 22 heavy equipment operators, 24 machinists, 44 welders, and 31 electricians).



# INFRASTRUCTURE SUPPORT



Caluya Wharf



Pocan Resettlement



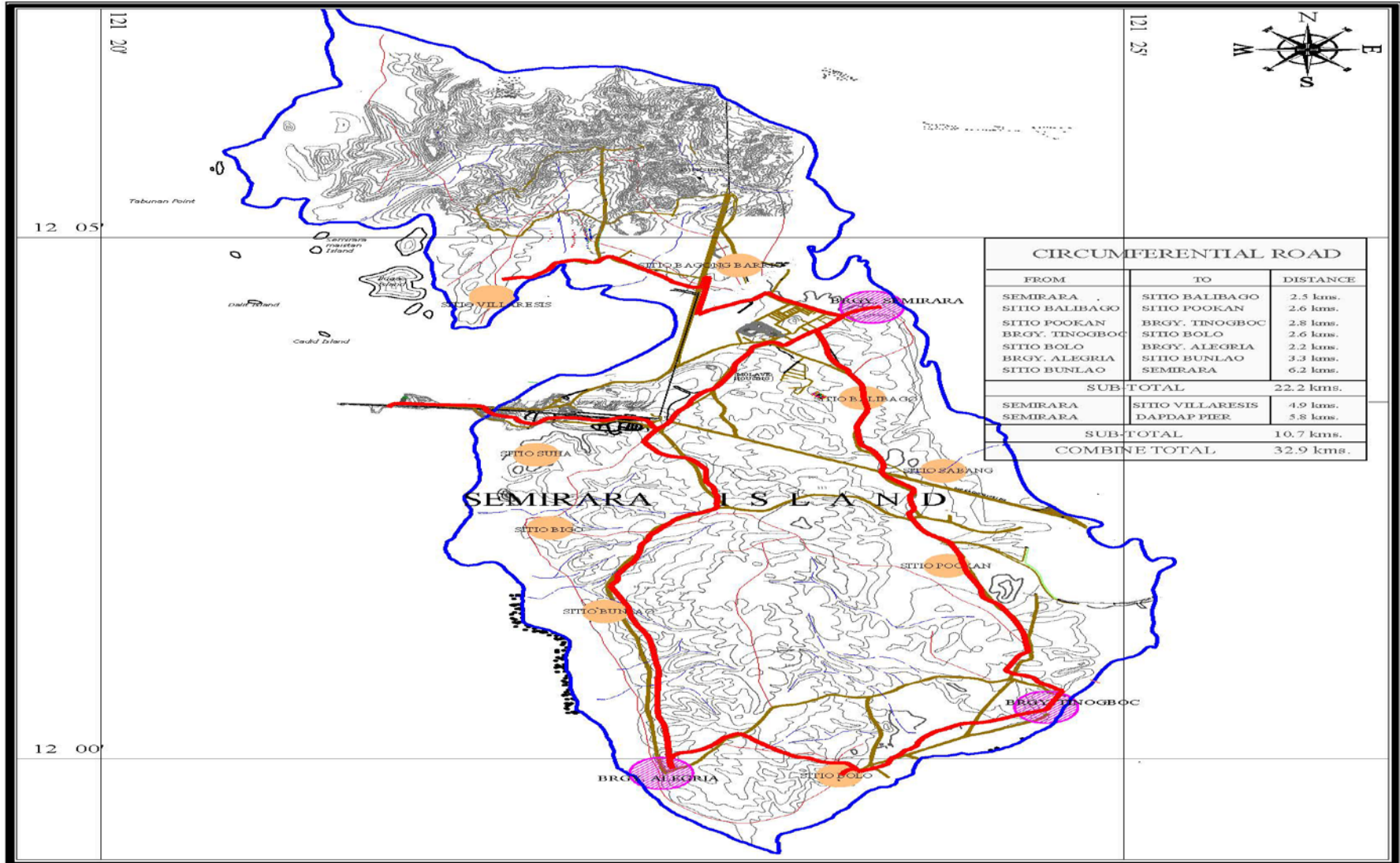
Food Court, Dry Market/Commercial Center



Airstrip

# INFRASTRUCTURE SUPPORT

## Circumferential Roads



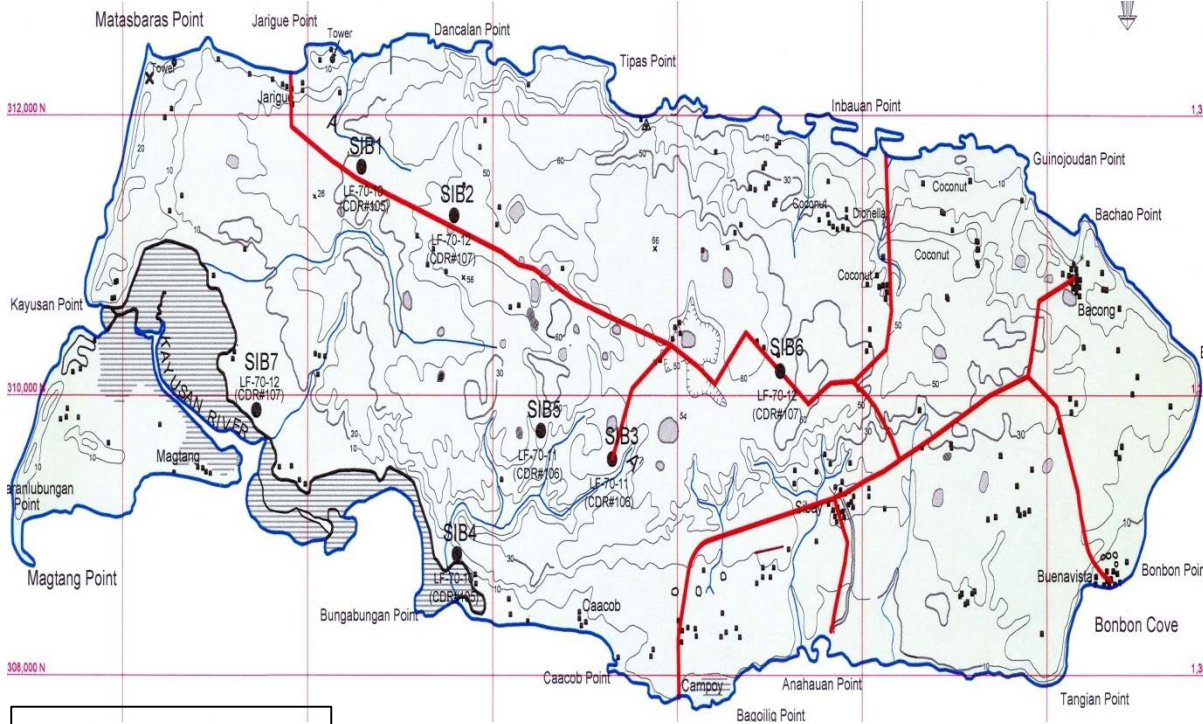
Semirara Island road network connecting communities with a total length of 32.9 kms. Roads include construction of drainage system.



# INFRASTRUCTURE SUPPORT

## Circumferential Roads

### Sibay Island: 19.6 Kms



Legend:  
 Road



### Caluya Island: 25.5 Kms

Total length of 45.1 kms. of island-road networks (Sibay and Caluya islands). Roads include construction of drainage system.



# INFRASTRUCTURE SUPPORT



Water filtration facility – Semirara Island



# INFRASTRUCTURE SUPPORT



Semirara Island new fishing ports

# INFRASTRUCTURE SUPPORT



Donated fishing boats with fish nets



# INFRASTRUCTURE SUPPORT



Poocon Relocation site with six-classroom school building



# INFRASTRUCTURE SUPPORT

Enrique Lorenzo



Marcelo Venturero



Provision of housing units for indigent families. The Company provided 1 lead man and materials; the residents themselves build their houses through “bayanihan” system.



# INFRASTRUCTURE SUPPORT

Alfredo Gabinete Sr.



Danny Vicente



Provision of housing units for indigent families



# INFRASTRUCTURE SUPPORT



Places of worship



# INFRASTRUCTURE SUPPORT



Lauan Parish Church, Caluya



Tinogboc Church



Four-Square Church



Four-Square Church



# INFRASTRUCTURE SUPPORT

Restoration of Calaca Cathedral, Batangas



Covered court and gymnasium





# INFRASTRUCTURE SUPPORT



Olympic-size Oval



# INFRASTRUCTURE SUPPORT



Olympic-size covered swimming pool



# INFRASTRUCTURE SUPPORT



Villaresis Day Care Center



# ICE STORAGE FACILITY



Year	Production (blocks)
2007	1,846
2008	5,910
2009	9,949
2010	7,704
2011	11,848
2012	7,950
2013	9,058
2014	9,890
2015	10,590
2016	10,590
<b>Total</b>	<b>85,335</b>

Availability of **ice blocks (130 kls. Each)** helped the fisher folks in the island maximize their earnings. Ice blocks are sold to them at a minimal cost of **PHP 0.72/kl.** since 2007.



# FOOD COURT & COMMERCIAL BLDG



A commercial building and food court were constructed to provide business opportunities to housewives or dependents in order to augment family income or local entrepreneurs.



# BANKING FACILITY IN THE ISLAND

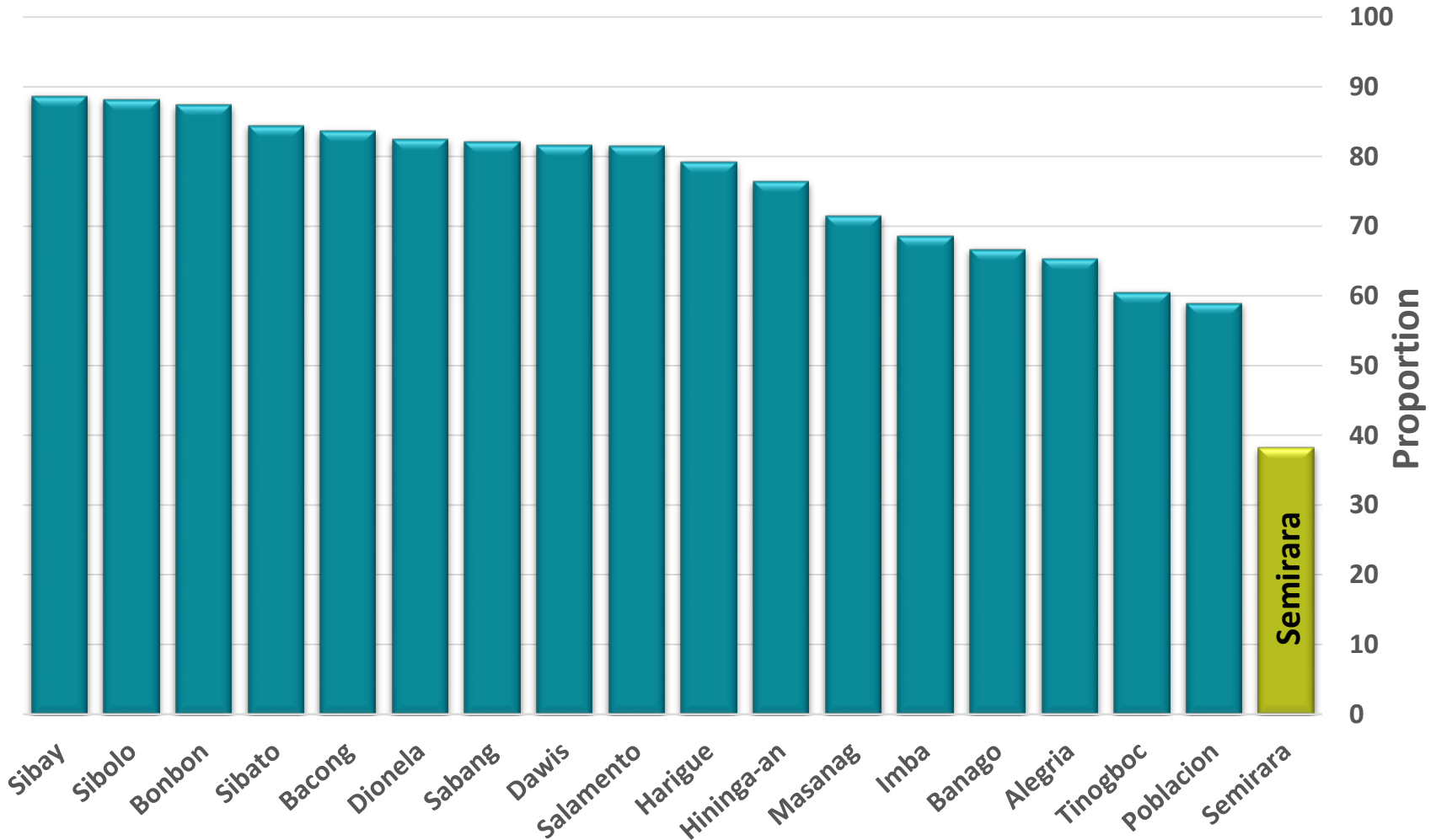


One Network Bank, a rural bank of Banco de Oro, connected to the country's major banking networks



# POVERTY THRESHOLD & POVERTY INCIDENCE

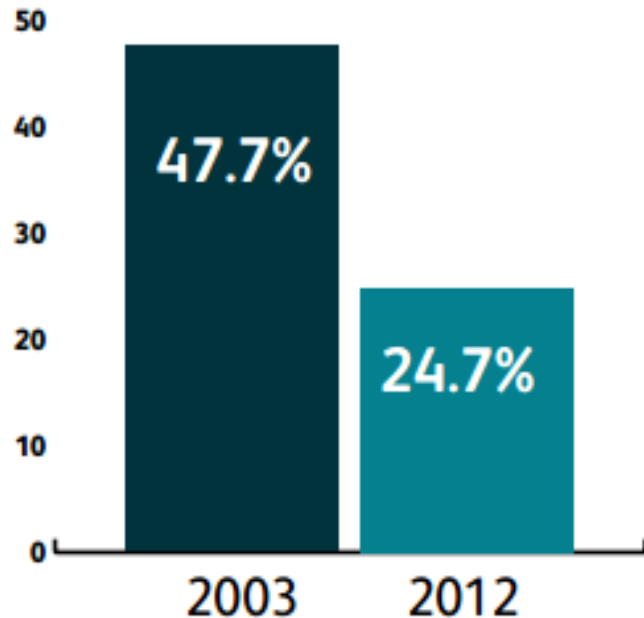
Proportion of Households With Income Below Poverty Threshold



\*Number of households with income below poverty threshold over total number of households

Source: CBMS Census 2015

## POVERTY INCIDENCE IN CALUYA, ANTIQUE

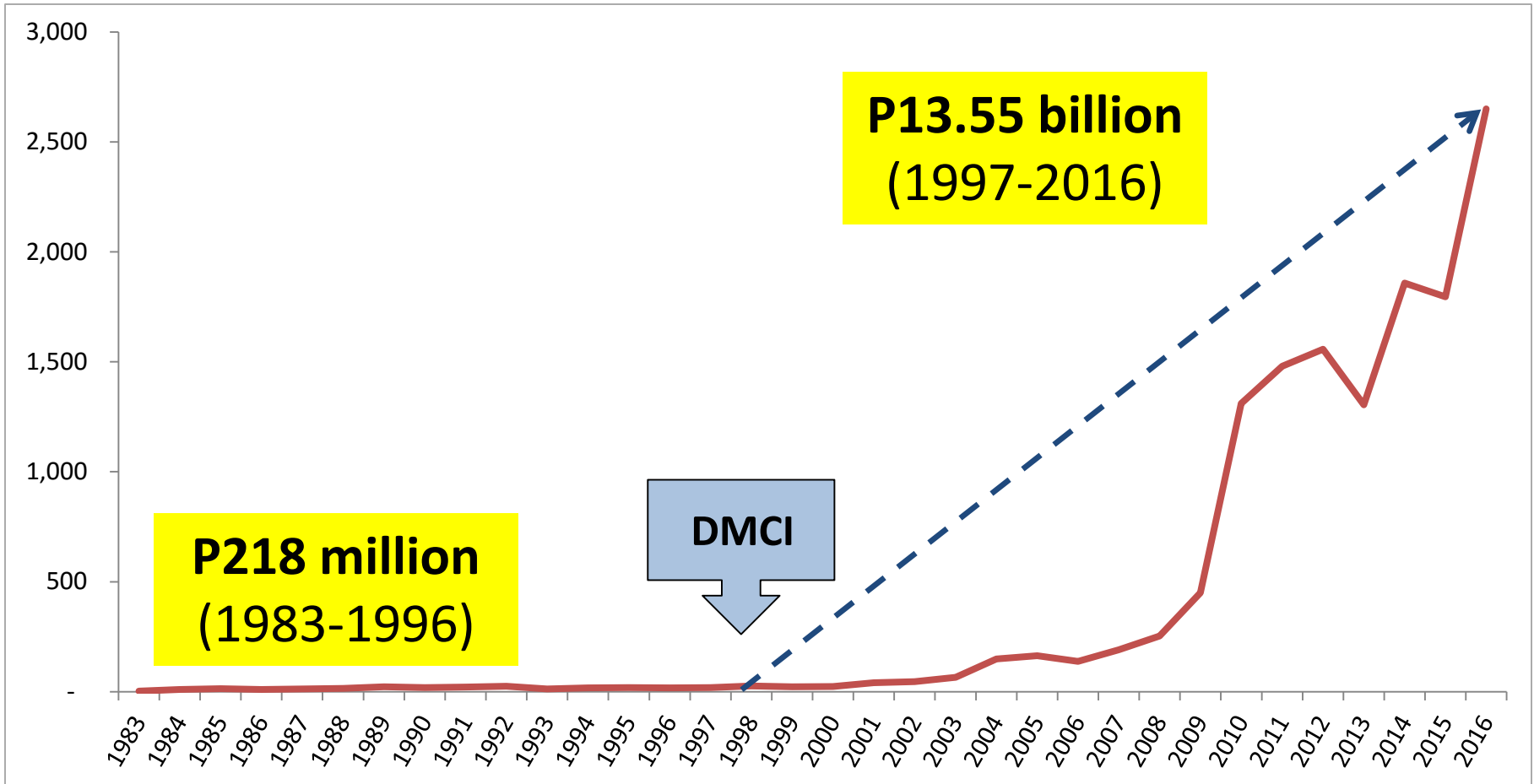


Poverty incidence of Barangay Semirara is **5.79%** based on the 2015 data of the Municipal Social Welfare and Development Office

\* The **incidence poverty measures** provide data on the quantity of people or households affected, normally expressed as a percentage of the population

# DOE ROYALTIES

In million PHP



Royalties paid to the government since the DMCI group bought into the company and took over management and operations totaled to PHP13.55 billion as of 2016.

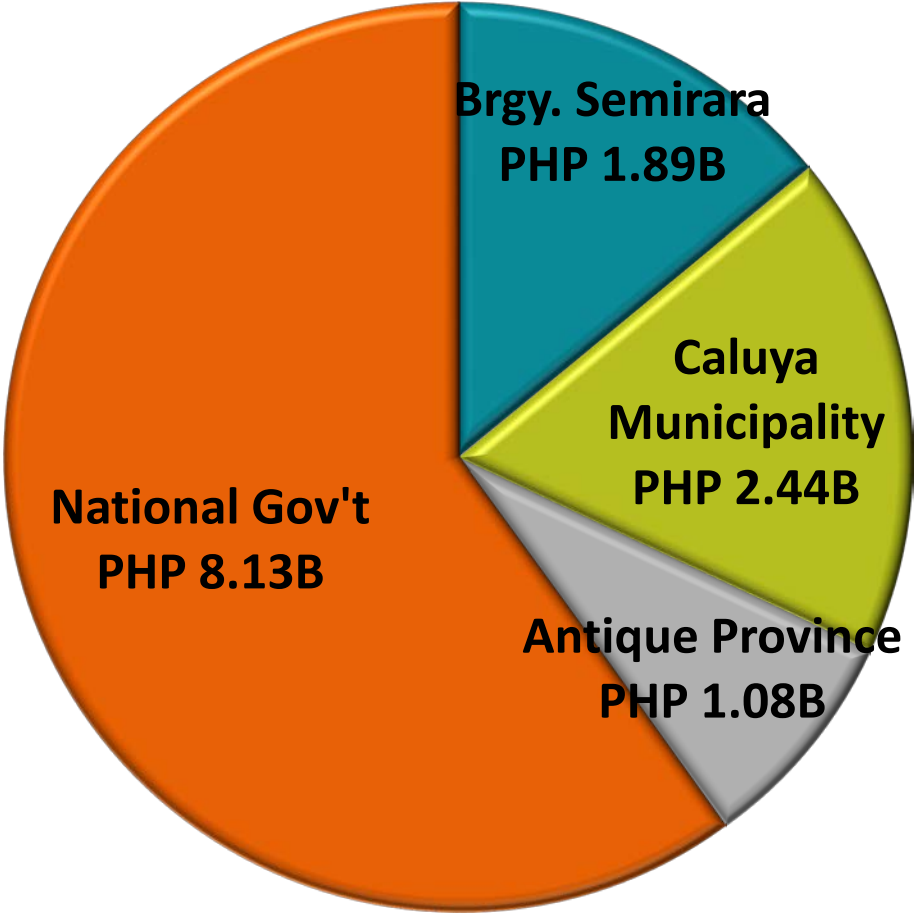


# DOE ROYALTIES

In million PHP



## 1997-2016 Gov't Royalties: PHP13.55B



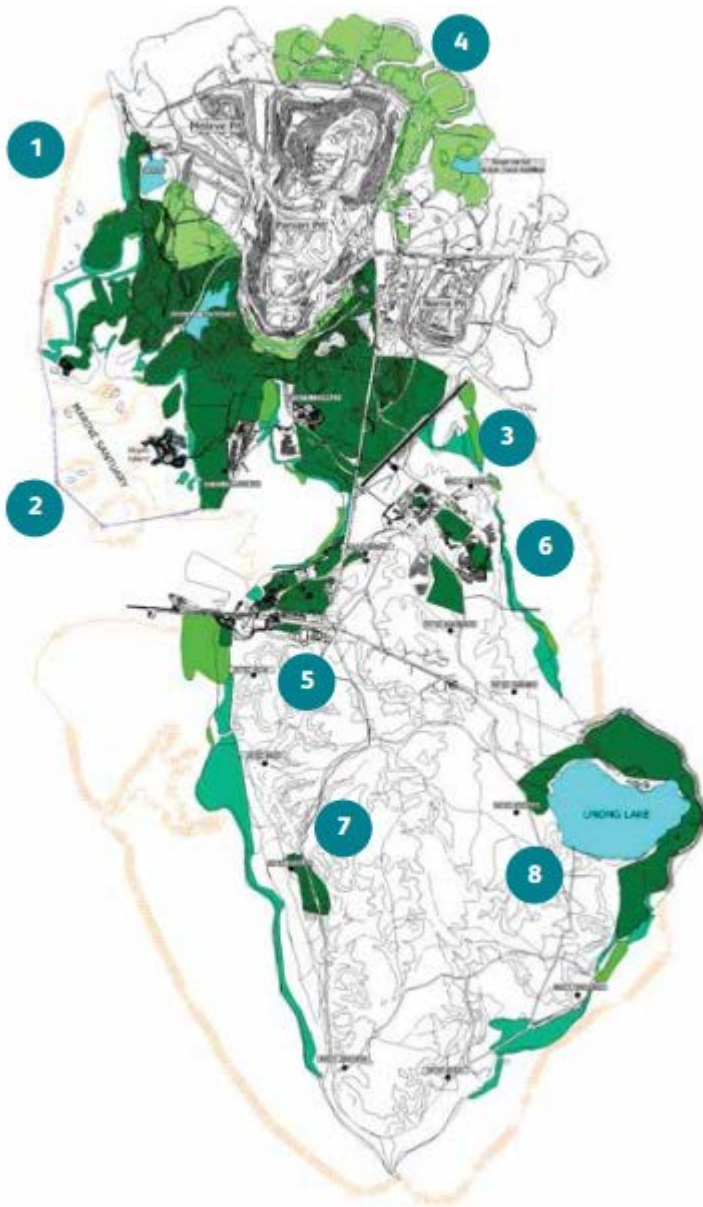
# COMMITMENT TO ENVIRONMENTAL STEWARDSHIP





# INLAND REFORESTATION & VEGETATION

2000 - 2016



Site	Number of Hectares
1	80.55
2	170.06
3	104.04
4	211.07
5	19.2
6	8.84
7	31.19
8	84.91
<b>Total</b>	<b>709.86</b>

288 ha. in Panian pit and 85 ha. in Unong pit are already rehabilitated with reforestation and vegetation as of end 2016.

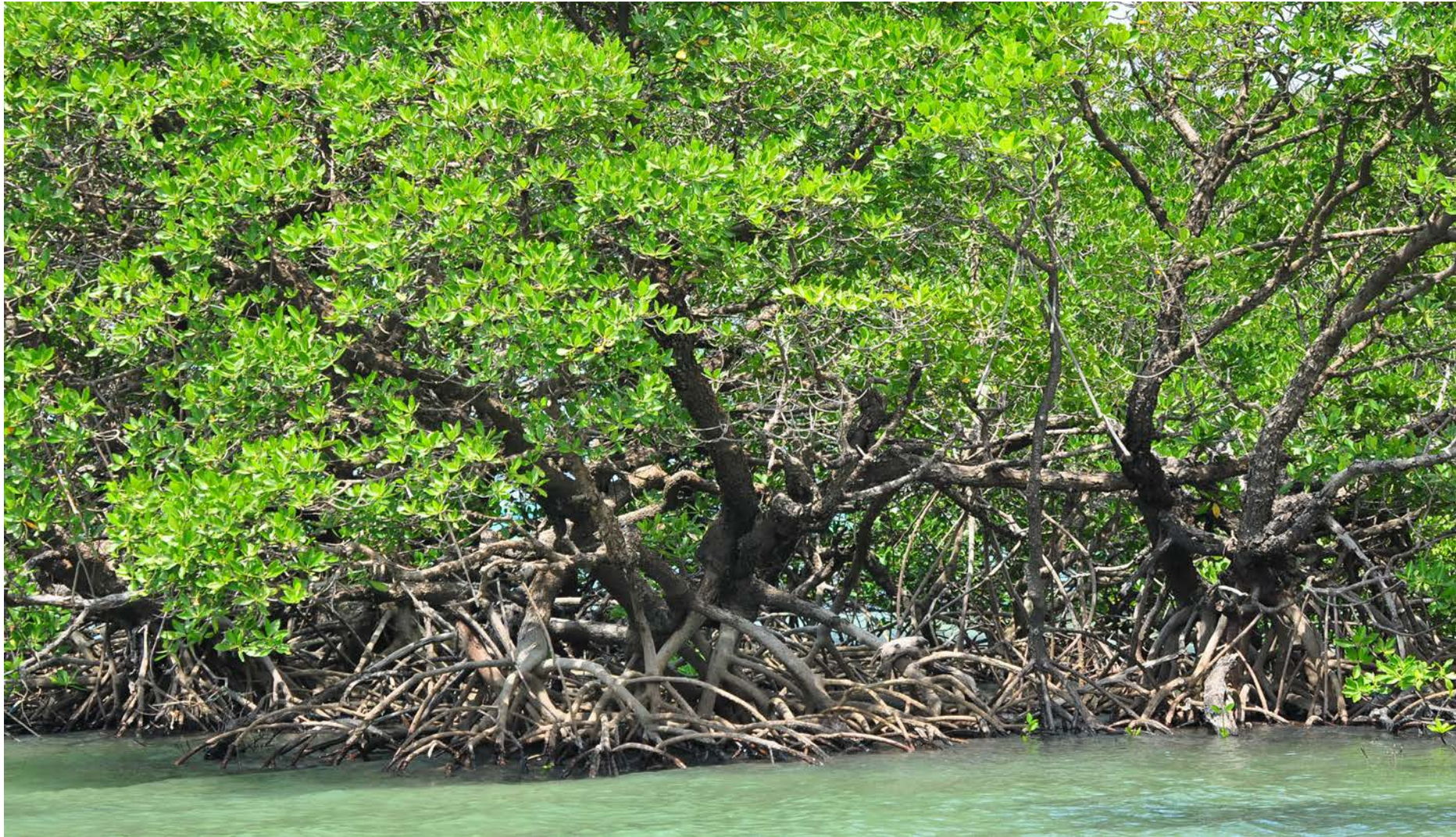
# PROTECTION OF OLD MANGROVES



The company protects around 300 hectares of naturally grown mangroves in the coastal areas of Semirara island.



# PROTECTION OF OLD MANGROVES



The company protects around 300 hectares of naturally grown mangroves in the coastal areas of Semirara island.



# PROTECTION OF OLD MANGROVES



The company protects around 300 hectares of naturally grown mangroves in the coastal areas of Semirara island.



# MANGROVE PLANTING





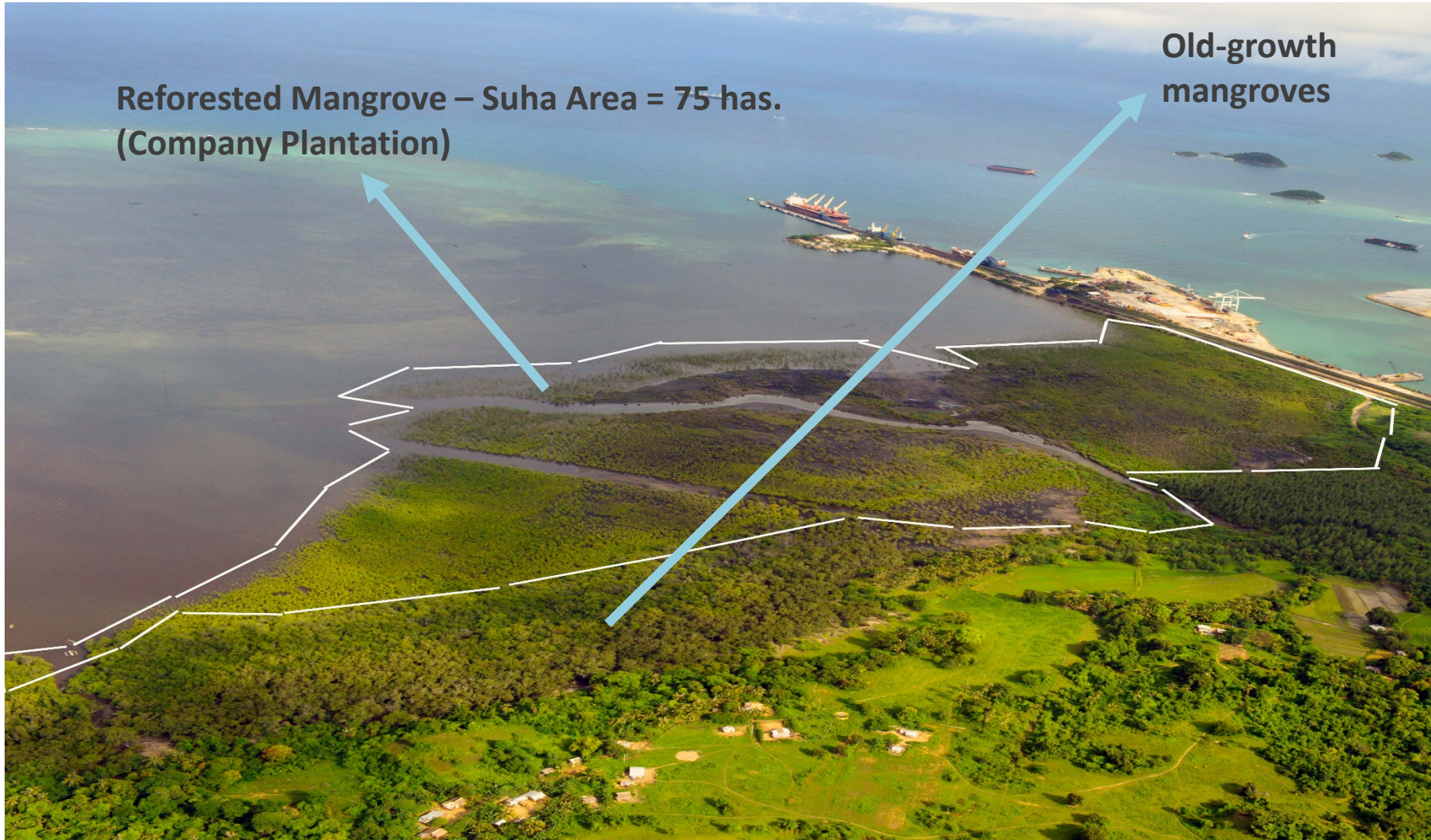
# NEW MANGROVES





# MANGROVE PLANTATION

2000 - 2016



# MANGROVE PLANTATION

2000 - 2016

LOCATION	NO. OF HECTARES	NO. OF HILLS PLANTED	NO. OF HILLS
AIRPORT/EASTDIKE/BANUA	40.98	182,163	154,770
BANTAYAN	0.23	1,040	957
BIGO	2.42	10,750	675
CASAY	2.05	9,112	8,201
KAYLONGGO	1.19	5,289	4,495
SIGAYAN	0.68	3,022	115
SPRING/MYRNA/AROMA	10.11	44,934	26,393
SUJA	74.56	331,379	323,163
TINOGBOC&SABANG	57.32	254,757	108,219
TORPIDO	2.25	10,000	8,138
VILLARESIS/PINAGPALA/PUN	4.64	20,624	12,561
<b>TOTAL</b>	<b>196.43</b>	<b>873,070</b>	<b>647,687</b>



# SEMIRARA MARINE HATCHERY LABORATORY



The Company established a facility for marine resources technology development on Semirara Island in 2006.



# GIANT CLAMS



*Tridacna Derasa*

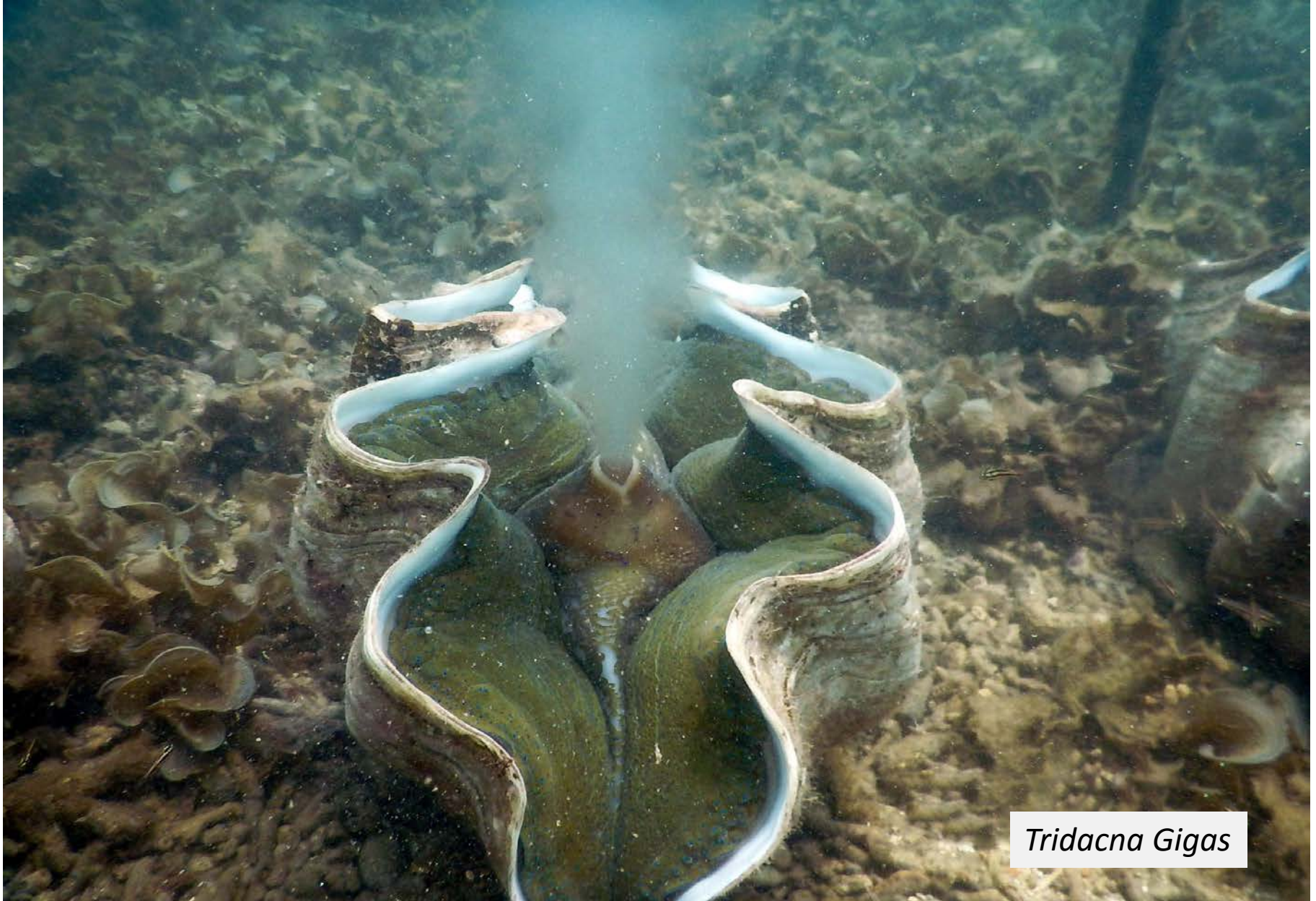


# GIANT CLAMS





# GIANT CLAMS



*Tridacna Gigas*



# GIANT CLAMS



*Tridacna crocea*



# GIANT CLAMS



*Tridacna Gigas*



# GIANT CLAMS POPULATION IN SEMIRARA



As of 31 December 2016

	Raceway Tanks	Ocean Nursery Garden	Ocean Nursery Cage	Broodstock	Marine Sanctuary (Reseeded)	Total
<i>Tridacna gigas</i>	2,700	3,432	85	142	26,944	33,383
<i>Tridacna squamosa</i>	25,741	11,783	35	44	18,066	55,669
<i>Tridacna derasa</i>	4,274	4,392	-	7	2,312	10,985
<i>Tridacna maxima</i>	150	480	-	24	469	1,123
<i>Tridacna crocea</i>	-	50	45	30	143	268
<i>Hippopus hippopus</i>	4,250	6,328	-	60	9,509	20,147
<i>Hippopus porcellanus</i>	1,000	18,197	103	2	10,378	29,680
Crossbreed	-	3,720	8		90	3,818
<b>TOTAL</b>	<b>38,195</b>	<b>48,382</b>	<b>276</b>	<b>309</b>	<b>67,911</b>	<b>155,073</b>

# PARTNERSHIP WITH SILLIMAN UNIVERSITY ANGELO KING CENTER FOR RESEARCH & ENVIRONMENTAL MANAGEMENT

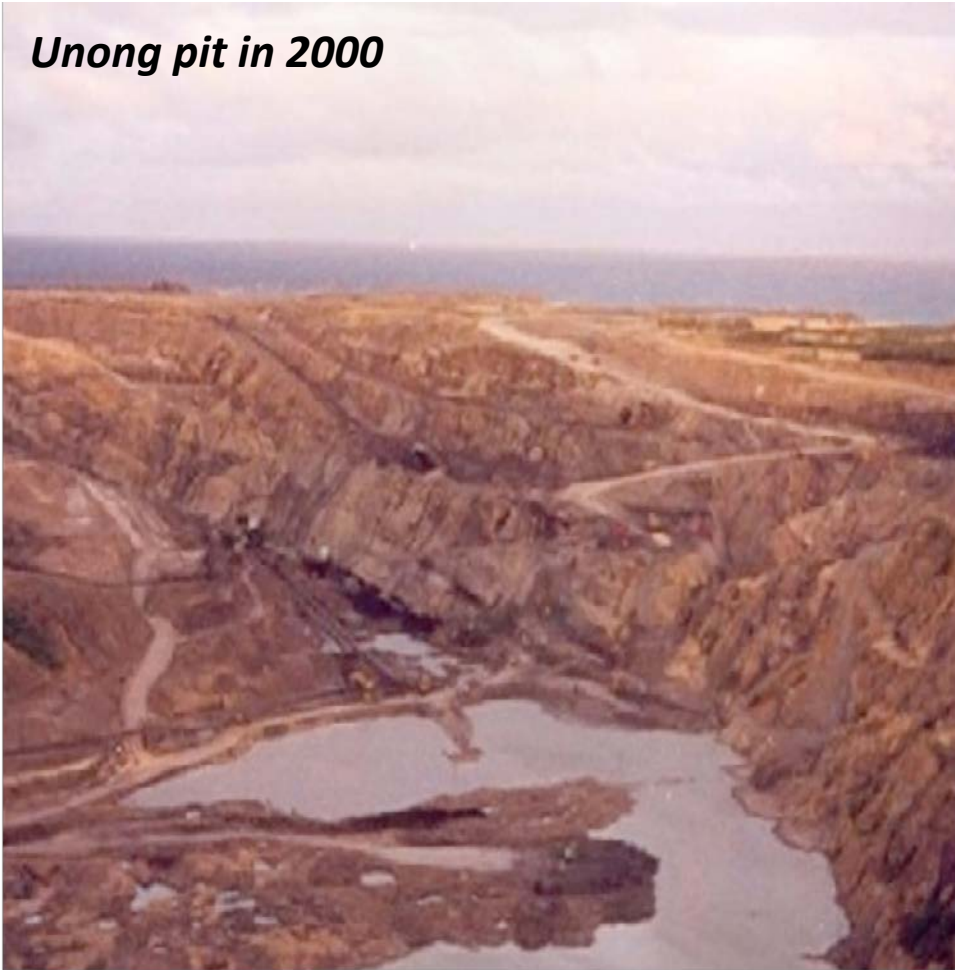


Dr. Angel Alcala orients the guests from Semirara on marine resources management at Apo Island, November 2015



# MINE REHABILITATION AT UNONG

*Unong pit in 2000*



*Unong today*



# RECREATIONAL AREA AT UNONG





# RECREATIONAL AREA AT UNONG



# PROGRESSIVE REHABILITATION AT PANIAN



Panian mine progressive rehabilitation started in 2011



# PROGRESSIVE REHABILITATION AT PANIAN



Panian Nursery

# EMERGENCY PREPAREDNESS





# EMERGENCY PREPAREDNESS





# INCREASE IN COAL MINING CAPACITY



We are increasing our coal mining capacity to 13-14 million tons in 2017.

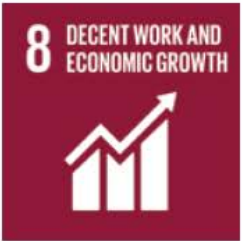


# POSITIVE OUTLOOK ON POWER



SCPC's Unit 1 is expected to perform better after undergoing some boiler enhancements. Both units of SLPGC are likely to secure their Turnover Certificates by second quarter of the year; and we are also looking forward to the successful commissioning of the 2x23MW gas turbine for ancillary services.

# UN 17 SUSTAINABLE DEV'T GOALS



Our corporate sustainability and social programs and initiatives are, and will continue to be aligned to the United Nations' 17 Sustainable Development Goals (SDGs) in close collaboration with the LGU.



# COMMITMENT TO STRONG CORPORATE GOVERNANCE



The awards and recognition we earned in the past few years manifest our staunch efforts to improving overall corporate governance practices to conform with higher global standards.

***END OF PRESENTATION***

***Thank you!***